



Contents:

[Whole school](#)

[Yr R](#)

[Yr 1](#)

[Yr 2](#)

[Yr 3](#)

[Yr 4](#)

[Yr 5](#)

[Yr 6](#)

[Whole school dates](#)

Whole School



LAST DAY OF TERM TODAY! WE WELCOME YOU BACK TO SCHOOL ON MONDAY 23RD FEBRUARY 2026.



FOSPS NEWS

FOSPS annual quiz night - RAFFLE PRIZES

We have had an amazing response to the quiz, with all tables now sold out, so thank you to everyone who has bought a table!

We are still looking for prizes for the raffle. In the past we have had amazing prizes including tickets to Bestival, afternoon teas, fitness vouchers and hampers. If you or your company would like to donate something we'd love to hear from you. If you think you can help please email fosps@swanmoreapps.com - anything big or small would be much appreciated.

Everyone will have a chance to buy raffle tickets after school on 27th February, as well as at the quiz night.

Second Hand Uniform

Please remember we have loads of second hand uniform for sale through the FOSPS website, with jumpers and cardigans available from as little as £1. Please visit <https://www.pta-events.com/swanmoreprimary/index.cfm>



Thought for the Week

At Swanmore Primary school the children explore their spirituality through a 'thought for the week'. The children are invited to use their deeper thinking to look at themselves, each other, and the wider world.

We also have a library of thought for the weeks through the year which will show you the type of activities the children have been doing in class. Please follow this bread crumb trail on the school website to discover more:

Home - Our school - Worship - and then pick the 'Thought for the week' tab and which term you'd like to look at.

Please take a look at the 3 folders as you will be able to see how the children explored the thought for the week in a particular term. We hope you enjoy looking at how the children explore their spirituality each week!

This week the children are looking at:



Thought
for the
Week

**To believe in something, and not to live
it, is dishonest.**

Think about an issue e.g. Bullying. What can the children do to show that they 'live' what they believe?



Half Term Literary Activities:

The children are very used to me encouraging them to continue reading throughout the holidays as this builds stamina, consistency and confidence but it's important to remember that reading enjoyment can be inspired in many ways, not just through independent reading.

Hearing adults talk about interesting things they've read or sharing memories of favourite childhood books helps children form positive associations with reading; studies show that children are most inspired to read by the adults in their lives so even short conversations about books and reading can really make a difference!

Additionally, many literary events take place throughout the year, offering a springboard for conversations and further reading. Below are a few events taking place during the February Half Term:

Portsmouth BookFest runs for three weeks, launching in Half Term with children's week! If you're looking for activities with the children in half term - take a look here for more information. [Children's Week: 16 February to 21 February](#)

Theatre is a wonderful way for children to connect with well-known literary characters and see them brought to life. Below are local literary productions that are taking place during half term:

Theatre Royal, Winchester

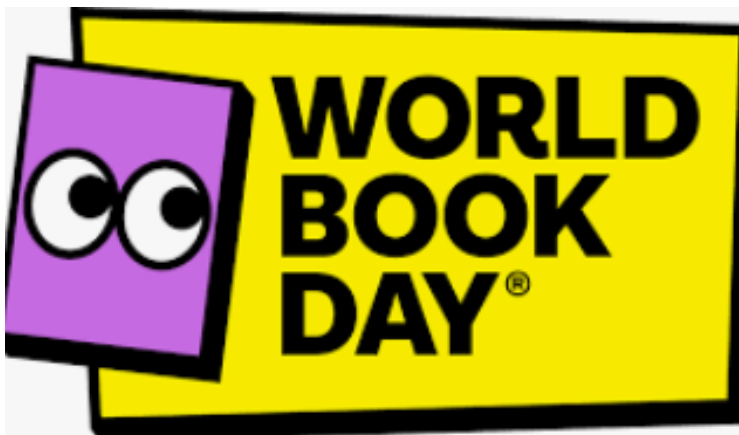
[The Tiger Who Came to Tea | Theatre Royal Winchester](#)

The Point, Eastleigh

[The Wind in the Willows | The Point Theatre Eastleigh](#)



World Book Day



World Book Day! You should now have all received an email at the beginning of the week with all the plans for World Book Day on Thursday 5th of March please check your inbox and junk mail. In readiness for this, we would welcome news of any families or companies that might be able to supply or donate large boxes, tubing or packing materials in the week commencing Monday 2nd March. Should you be in a position to assist us with this, please email library@swanmoreapps.com for further information. Thank you for your support.

Playground at Lunchtime

Our Young Governors have shared that they would like the opportunity to play with children in the opposite Key Stage at lunchtimes. They have explained this is because of friends and siblings in a different Key Stage. Whilst there was some 98% of children in agreement, the YGs wanted to seek the views of parents as the playground was spilt for specific reasons. Could you please look to help them collate views by returning this attached short questionnaire. Thank you!

[Playground at Lunch Time – Fill out form](#)



Reminder for Parents

Please can we remind you that parents should not use the staff car park at any time during the day to drop off or collect children. The pavement outside the school should also not be used for parking. These measures are in place to ensure the safety of all children, families, and staff. Thank you for helping us keep our school community safe.

After School Club Futsal Years 2 – 4

There are just 3 spaces left, so if you haven't booked in yet, please make sure you do to save any disappointment.

Volunteers to listen to children Read

Dear Parents, we have some children throughout the school who are below their peers in their reading ability. Regular support to develop fluency and the opportunity to talk about the books they are reading will have a huge impact on their progress and, as a result their life chances. Reading is a key life skill and one which we are determined to impart to all our children however we need help to achieve this. We are looking for volunteers (parents, grandparents, neighbours) to help give children extra support with daily practice reading out loud. Generally, afternoons are preferable (any time from 1.15pm), although we can accommodate mornings. If you are able to commit to a regular time this would be a great help in order for the children to build a relationship with you and enable you to see the progress they are able to make over a period of time. Whilst a couple of hours of support weekly would be great, we are also looking for a team of people who can change their 3.30pm pick up routine and come to school at 3pm and give us a regular half an hour slot.

If you are able to help us, we would be extremely grateful. We have a booklet to help volunteers with how to support the children's reading. However, I am more than happy to answer any questions volunteers may have about the process.

An enhanced DBS check will need to be completed before people can help in school but our office team can help you with this process. Please ring the school on 01489 894555, email adminoffice@swanmore-pri.hants.sch.uk or call in at the office if you are interested in volunteering.

Many thanks

Mrs J Hughes

Early Reading & Phonics Lead

Pop Up Food Bank

It's back! We're running our Pop-Up Food Bank this year in support of the Meon Valley Foodbank. If you are able to please bring along any donations to the playground before the start of the day and we will load them on to the mini bus and take it over to the Meon Valley Food bank for local families.

In December, perhaps a Christmas 'treat' might be there to help with the festivities even! Thank you in advance!

Pop Up Food Bank Dates

5th Dec	20 th March
12th Dec	17 th April
16th Jan	22 nd May
13th Feb	19 th June

Reception

I
[Top](#)

Year 1

Year 2

Y2JB Class assembly Friday 27th February 2026 at 3pm in the School Hall

Year 2 will be joined by a student teacher, based in Woodpeckers class, for the Spring term

Futsal after school club for years 2 – 4 there are just 3 spaces left so if you haven't booked in yet, please make sure you do to save any disappointment.

Year 3

Y3 River Trip Thursday 26th February 2026

Futsal after school club for years 2 – 4 there are just 3 spaces left so if you haven't booked in yet, please make sure you do to save any disappointment.

Year 4

Futsal after school club for years 2 – 4 there are just 3 spaces left so if you haven't booked in yet, please make sure you do to save any disappointment.

Y4 Production Wednesday 25th March at 6.30pm and Thursday 26th March at 2.15pm

Year 5

[Top](#)

Year 6

Y6H Wales Residential Monday 23rd February to Friday 27th February 2026

Y6M Wales Residential Monday 2nd March to Friday 6th March 2026

REMINDER FOR ALL PAYMENTS NEED TO BE MADE FOR THE WALES TRIP PLEASE AS SOON AS POSSIBLE!

Room Hire

Our Community Room is furnished with a easy to move table and chairs and is easily accessible. It can host up to 8 people. From £16.50 an hour



Advertise with us

We offer various opportunities to promote your goods and services. Display your posters, banners or leaflets at a very reasonable price.

Digital Library



Spydus Library
Renew & reserve
Our library app
where you can
search our
catalogue, reserve
and renew books



BorrowBox
eBooks & audiobooks
Read e-books and
listen to e-audiobooks
for free. Download
up to 5 at a time using
your library account

These apps are **FREE**

You will need a library account to use them

Opening hours

Monday	Closed
Tuesday	1.00 - 5.00pm
Wednesday	9.30 - 1.30pm
Thursday	Closed
Friday	1.00am - 5.00pm
Saturday	9.30am - 1.30pm
Sunday	Closed



Free
Period
products



Printing
Copying
Scanning



Free
WiFi



Computer
use

Follow us:



facebook.com/bishopswalthamlibrary

Bishops Waltham Library



Rhyme time, craft groups
and so much more!



Hampshire
County Council

Library Service



hants.gov.uk/library

What's on for Children...

Board Games Fun

Every Friday 3.30 - 4.40

Enjoy some classic board and card games as an after school treat.

Construction Club

Every Saturday 10.00-12.00

Our Saturday construction club is a great family activity. We have a range of building blocks to suit all ages. The only limit to the creations is your imagination!



Rhyme Time

Every Tuesday 1.45 - 2.15

Join in with rhymes and actions to get your little ones moving and off to a great start on their literacy journey

Stay and Play

Every Wednesday 10.00 - 12.00

Drop-in session with toys suitable for babies up to preschoolers.



New Parent Meet and Connect

Every Tuesday 2.15 - 3.15

A perfect session for new parents and carers - a chance to meet and chat with other parents while little ones explore sensory toys.



What's on for Adults...

Knit and Natter

Alternate Wednesdays 10.00-12.00

Are you a knitter or is crochet more your thing? Perhaps you quill or even quilt. Whatever it is that gets your creativity flowing, come and join like minded crafters to share ideas, advice and friendship, while working on whatever project you have on the go.



Learning in Libraries

We also offer many free courses and workshops through our partners, Learning in Libraries.

Visit shop.hants.gov.uk to find your next interest!

Warm and Welcome

Pop in to enjoy time with a book, magazine or newspaper.

We offer free wifi and provide access to public computers.



Part of
Green and Thrifty
Fortnight



Bug Masks

at Bishops Waltham Library
From Tuesday 24 February (Available all
week whilst supplies last)
£1 per craft pack

Part of
Green and Thrifty
Fortnight



Junk Modelling

at Bishops Waltham Library
Saturday 14, 21 and 28 February
Free - as part of our usual Construction
Club

Green & Thrifty fortnight at Bishops Waltham Library

Part of
**Green and
Thrifty**
Fortnight



Valentines Heart Decorations

Recycled Valentines heart decorations

Available from Saturday 14 February

All of our regular activities will
be continuing during half term:

Rhyme Time - Tuesday
1.45 - 2.15

New Parent Group -
Tuesday 2.15 - 3.15

Stay and Play - Wednesday
10.00 - 12.00




Wildlife Windchimes


Available from 17 February

Bug Masks

Available from 24 February




Craft packs
are £1 each



Saturday 14, 21 and 28 February

We will have junk modelling
available as part of our usual
Construction Club



Part of
Green and Thrifty
Fortnight



Wildlife Windchimes

at Bishops Waltham Library
From Tuesday 17 February (Available all
week whilst supplies last)
£1 per craft pack

Part of
Green and Thrifty
Fortnight



Recycled Valentine Heart Decoration

at Bishops Waltham Library
From Saturday 14 February
£1 per craft pack

LEGO LUNCH

18TH Febuary

St John the Baptist, Shedfield

11am – 1pm

Aimed at 4 – 11 year olds

Children need to be
accompanied by a responsible
adult

For more information please
contact

Chris on 07906 436391



**SWANMORE
PRIMARY SCHOOL**

**LEARNING
THROUGH
SPORT**
SCHOOLS COMMUNITY FOOTBALL



AFTER SCHOOL CLUBS

CLUB TIMETABLE

WEDNESDAY- FUTSAL YRS 2-4

Futsal is a fast-paced, small-sided version of football played with a smaller, low-bounce ball, helping players develop close control, quick decision-making, creativity, movement, and teamwork in a fun and inclusive environment.

WEDNESDAY

3:30 pm - 4:30 pm

All bookings must be made in
advance

CLUBS INCLUDE:

FUTSAL

PRICE- £5.00 PER SESSION

STARTS 25TH FEB

BOOK HERE!



[HTTPS://PBBL.UK/4RVRVBS](https://pbbl.uk/4rvrVBS)

SCAN ME



Holiday Activities



Easter 2026

MUSIC PRODUCTION

The Rose Theatre, Barton Peveril College, Eastleigh

Mon 30th & Tues 31st March

9:30am – 3:30pm

Suitable for children in Years 5,6,7 and 8

£85 (both days) including lunch



Dive into the world of music creation using iPads and GarageBand. Explore remixing, sampling, and live DJing with hands-on experience using professional gear. Discover how chords shape songs, experiment with different genres, and learn to build your own tracks from the ground up. Whether you're into beats, melodies, or mixing, everything you need is provided - just bring your creativity!



[Click here to watch a video about the enrichment days](#)



[Click here for the sign up form](#)

ROCK 2 THE BEAT

The Rose Theatre, Barton Peveril College, Eastleigh

Mon 30th & Tues 31st March

9:30am – 3:30pm

Performance Tues 31st at 3:30pm

£85 (both days) including lunch



Suitable for all Years 3-10 currently playing in a Rock 2 the Beat band, or who currently learn voice, guitar, bass, keyboard or drums at Grade 1 (or above) and are able to read basic notation.

Come and join other Rock 2 the Beat musicians from around the county and learn a song from start to finish, building confidence through collaboration and creativity. Limited places for each instrument, places will be allocated on a first come first served basis.



[Click here for the sign up form](#)

Holiday Activities

HAMPSHIRE
MUSIC
EDUCATION
HUB



Summer 2026 GET MUSICAL!

Five Days of Musical Theatre Magic – Western Style!

The Rose Theatre, Barton Peveril College, Eastleigh

Mon 10 – Fri 14 August 2026

10:00am – 4:00pm

Performance Friday at 5:00pm

Suitable for Year 4 – Year 13

£185 (includes £30 non-refundable deposit), including lunch

Breakfast Club available each morning from 8:30am at a
cost of £5 per day



Saddle up for an unforgettable week of singing, dancing, and acting as we bring the Wild West to the stage! Learn iconic show tunes, master toe-tapping choreography, and perform a spectacular medley at the end of the week.



[Click here for the sign up form](#)

★ *Whether you're a seasoned performer or trying musical theatre for the first time, this is your chance to shine!* ★

For more information

 music.service@hants.gov.uk

 hantsmusichub.org.uk/holidayactivities

SAVE THE DATE – MORE INFORMATION TO FOLLOW

***Our Rock 2 the Beat and Music Production enrichment days will run on
Monday 10th and Tuesday 11th August 2026.***

Active Holiday Camps



Swanmore College



SWANMORE
COLLEGE
Centre of Excellence

February Half Term

Monday 16th - Friday 20th February 2026

» Multi-Sports

This camp is ideal for all-rounders, offering a mix of your favourite sports and new activities.



Scan the QR code to
find and book your
nearest venue!

» Football

Learn key skills through fun sessions, games, and matches all week long!

- For ages 4-13 years
- 9am to 4pm
- Extended day options available

» Performing Arts

This camp is an action-packed week of dance, routines, technique, and fun!

£26.25 per day*

Get 15% off
with our Active
Saver code
'**FEBAS15**'
expires **Sunday**
1st February.



*FREE Mini
Campers for
children aged 4
and in Year R!



For more information or to book, visit:
www.activeme360.com

@activeme360



Active Holidays

Holiday Activities and Food Programme



Swanmore College



SWANMORE
COLLEGE
Centre of Excellence

February Half Term

Monday 16th - Friday 20th February 2026

» HAF Camp

Our HAF camp offers nutritious meals, engaging activities, and free childcare spots to children who receive benefit-related free school meals, supporting their health, wellbeing, and learning.

Free

- For ages 4*-13 years *They must be 4 years old and in Year R
- 9am to 4pm
- Wraparound Care available (charges apply)



Scan the QR code to find and book your nearest venue!



For more information or to book, visit:
www.activeme360.com

@activeme360

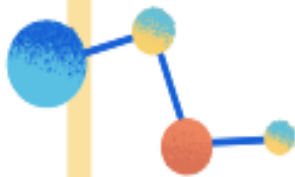




WALTHAM CHASE METHODIST CHURCH

CALLING ALL JUNIOR
SCIENTISTS

LET'S HAVE FUN!

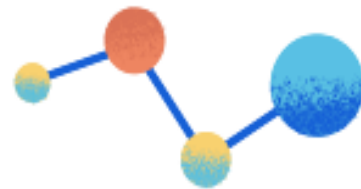


MEGA MAKERS

LIGHTHOUSE HOLIDAY CLUB

THURSDAY 19TH FEBRUARY

0930 - 12:30



science games, cooking, craft
and much more

£3.00 per child aged 5-11 years

TO BOOK A PLACE

Contact: anouska@chasemethodist.org

Tel: 07875218141



Your Health Visiting and School Nursing records all in one place...
at your finger tips



View and manage
your appointments
with Health Visitors



View your child's
vaccination history and
newborn blood spot
screening results



Search a wide
range of resources
about children's
health



View growth charts
and add
measurements



The Ages and Stages
questionnaires are
available for you to
complete electronically
before your child's 1
year/2 year health
reviews



National Childhood
Measurement
Programme.
Receive results of your
child's height and
weight measurements
(Year R and Year 6).

Today's health, tomorrow's future

Sign up today! Email parent.portal@nhs.net



We CARE through:



Compassion



Accountability



Respect



Excellence



Good Autism Practice

Gain practical knowledge, and discover hands-on tools and techniques to support autistic children in your setting.

Who is this training for?

This is a module for practitioners who work directly with autistic children in schools, and it provides guidance on processes and tools that can help practitioners to implement good autism practice.

What will you learn?

- Develop your knowledge and understanding of good autism practice
- Reflect on and improve your practice in working with autistic pupils
- Understand strategies and approaches you can draw upon for autistic pupils you work with
- Reflect on the kind of information you need to collect for creating a person-centred education plan
- Consider how to involve the autistic pupil and their family in setting learning goals

5
Hours



Developed by leading autism specialists



Up to date with the latest research



Enhances your CPD



Free resources and frameworks linked to Ofsted



Optional certification

Hub name Better Together Alliance

Date Thursday 26 February 2026

Time 9.30am – 2.30pm

Details Osborne School
Athelstan Road
Winchester
Hampshire
SO23 7GA



Henry Tyndale School
Learning & Achieving Together

Cost

£70.00
per person

Book your training now:

Email us at
bettertogether@henrytyndale.hants.sch.uk

Anxiety

Understanding & strategies to support young people

Tickets £20
Tea and
coffee
included

The day will provide an overview of the anxiety parent-led intervention we deliver for children and young people in CAMHS.

It is an opportunity for interaction and activities which will give psychoeducation and normalising of anxiety.

There will be chances to learn and practice strategies we teach parents in the intervention.



28 January 2026

The Irish Centre,
Council Road,
Basingstoke, RG21 3DH

11 November 2026

The Pallant Centre,
The Pallant,
Havant, PO9 1BE



For more information scan the QR code or visit:

<https://hampshirecamhs.nhs.uk/events/>

UNDERSTANDING ADHD



Tickets £20
Tea and
coffee
included

A day that focuses on skills and strategies, for parents, carers and professionals supporting a child with ADHD. Hampshire CAMHS Colleagues will be hosting this day alongside parents / carers with lived experience.



Understanding your child with ADHD, support, strategies and tips. Led by the Hampshire CAMHS ADHD team.

Support for SEN in education & what to do if it's not working. Led by Gayle Moir, SENDIASS Services Manager.

ADHD nervous system differences, sensory systems, emotional regulation, stress response, attention regulation, and executive functioning, Led by Courtney Freedman-Thompson-coach and wellbeing facilitator and lived experience.

5 March 2026

Junction Church,
2 Romsey Road,
Eastleigh SO50 9FE

16 Sept 2026

The Pallant Centre,
Havant, PO9 1BE

3 November 2026

Andover Baptist Church,
Charlton Road, Andover
SP10 3JH

For more information scan the QR code or visit:

<https://hampshirecamhs.nhs.uk/events/>



HOW TO COPE WHEN YOUR CHILD CANT

Tickets £25
Tea, coffee
and lunch
included

Three one-day events focused on parents/carers understanding their own needs, and learning strategies to look after themselves as they support a young person with their own mental health needs.

Each morning session will focus on different topics - further details can be found on our website.

The afternoon session will focus on How to Feel Better as a Parent in Burnout.

For more information and to book a place go to:
<https://hampshirecamhs.nhs.uk/events/>

Thursday, 22 January 2026
9:30am - 3:15pm

**St Peters Church Centre,
Jewry St, Winchester
SO23 8RY**

Friday, 15 May 2026
9:30am - 3:15pm

**The Hilt, Hiltingbury Road,
Chandlers Ford, Eastleigh
SO53 5NP**

Wed, 30 September 2026
9:30am - 3:15pm

**The Irish Centre, Council Road,
Basingstoke, RG21 3DH**

Some events have a small charge to allow us to cover costs, some discretionary free tickets are available

EMBRACING AUTISM

Tickets £20
Tea and
coffee
included

A day that focuses on skills and strategies, for parents, carers and professionals supporting a child with Autism.

Topics include:

- Supporting your autistic child to thrive - adapting to meet the needs of the autistic young person and practical strategies.
- Support for SEN in education & what to do if it's not working.
- Supporting Young People to Make Sense of their Experiences - empowering young people and putting them at the centre of their experience.

Discretionary tickets available to families on request.

4 February 2026

The Pallant Centre,
Havant, Hampshire
PO9 1BE

9 July 2026

Junction Church,
2 Romsey Road,
Eastleigh, SO50 9FE

17 November 2026

Andover Community Church
Charlton Road, Andover
SP10 3JH

For more information scan the QR code or visit:

<https://hampshirecamhs.nhs.uk/events/>



From **Hola** to **Hablando**: Spanish lessons for everyone



Join our Spanish Club!

Did you know Spanish is in the TOP 3 most spoken languages?

**Spanish after school Club – Tuesday's
at Swanmore Primary School**

If you are interested in signing up your child, please click on my booking link <https://spanish-4-kids.classforkids.io>, selecting the relevant school club to secure your child's place. Alternatively, if you wish to book a TRIAL lesson for your child, please feel free to using the above link!

If you have any questions, please do feel free to get in touch with me direct.
Pippa Chia - spanish4kidshants@gmail.com 07971 213619

Find out more at www.spanish4kids.co.uk



Spanish4Kids
AND ADULTS!