



Contents:

[Whole school](#)

[Yr R](#)

[Yr 1](#)

[Yr 2](#)

[Yr 3](#)

[Yr 4](#)

[Yr 5](#)

[Yr 6](#)

[Whole school dates](#)

Whole School



FOSPS NEWS

Rags 2 Riches - FOSPS will be circulating Rags2Riches bags in the coming days which can be filled with good quality, reusable clothing. These are then donated to those in need and the school earn money for every kilo. Please look out for the leaflet sent with the bags as to what can be donated, but essentially good condition clothing and shoes - no stains, tears or broken zips etc and no uniform or sports kit please.

FOSPS will be in the playground to collect these back in on

Friday 6th Feb - at afternoon pick up

Tuesday 10th Feb - morning drop off

Please don't bring your donations in any other time as we need to be there to collect them.

Once the donation bag is filled, you are welcome to use additional well-tied bin bags, but no supermarket carrier bags please.

Thank you in advance for all your donations! School Disco - Thursday 12th Feb

Tickets now available from the FOSPS website

<https://www.pta-events.com/swanmoreprimary/index.cfm?event=event&eventId=106445>

We are looking forward to the children's school disco, after school, on Thursday 12th Feb.

Tickets include entrance to the disco, a snack and a drink, glitter and tattoo stand and photobooth!

In support of Children's Mental Health Week we're delighted to share we will be donating 10% of profits from this event to a Children's mental health charity.

Please see the website for more info, and year group timings.

We still need a couple of volunteers for the YR 2&3 and the Y4,5&6 discos, so if you are able to help please sign up on the website, we would hugely appreciate it!

FOSPS annual quiz night - Saturday 28th Feb 18:30 - NOW SOLD OUT

We are still look for prizes for the raffle. In the past we have had amazing prizes including tickets to Bestival, afternoon teas, fitness vouchers and hampers. If you or your company would like to donate something we'd love to hear from you. If you think you can help please email fosps@swanmoreapps.com - anything big or small would be much appreciated.

Everyone will have a chance to buy raffle tickets as we will be selling these prior to the quiz after school, as well as at the quiz night.



Playground at Lunchtime

Our Young Governors have shared that they would like the opportunity to play with children in the opposite Key Stage at lunchtimes. They have explained this is because of friends and siblings in a different Key Stage. Whilst there was some 98% of children in agreement, the YGs wanted to seek the views of parents as the playground was spilt for specific reasons. Could you please look to help them collate views by returning this attached short questionnaire. Thank you!

[Playground at Lunch Time – Fill out form](#)



Thought for the Week

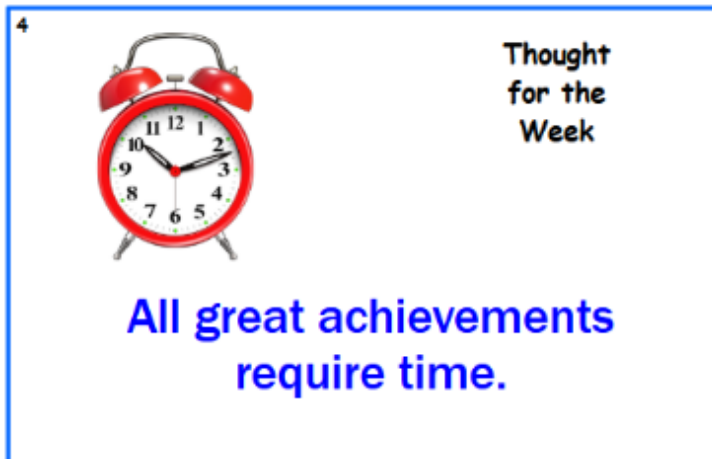
At Swanmore Primary school the children explore their spirituality through a 'thought for the week'. The children are invited to use their deeper thinking to look at themselves, each other, and the wider world.

We also have a library of thought for the weeks through the year which will show you the type of activities the children have been doing in class. Please follow this bread crumb trail on the school website to discover more:

Home - Our school - Worship - and then pick the 'Thought for the week' tab and which term you'd like to look at.

Please take a look at the 3 folders as you will be able to see how the children explored the thought for the week in a particular term. We hope you enjoy looking at how the children explore their spirituality each week!

This week the children are looking at:



What would you like to achieve – today? This week? This month? This year?

Volunteers to listen to children Read

Dear Parents, we have some children throughout the school who are below their peers in their reading ability. Regular support to develop fluency and the opportunity to talk about the books they are reading will have a huge impact on their progress and, as a result their life chances. Reading is a key life skill and one which we are determined to impart to all our children however we need help to achieve this. We are looking for volunteers (parents, grandparents, neighbours) to help give children extra support with daily practice reading out loud. Generally, afternoons are preferable (any time from 1.15pm), although we can accommodate mornings. If you are able to commit to a regular time this would be a great help in order for the children to build a relationship with you and enable you to see the progress they are able to make over a period of time. Whilst a couple of hours of support weekly would be great, we are also looking for a team of people who can change their 3.30pm pick up routine and come to school at 3pm and give us a regular half an hour slot.

If you are able to help us, we would be extremely grateful. We have a booklet to help volunteers with how to support the children's reading. However, I am more than happy to answer any questions volunteers may have about the process.

An enhanced DBS check will need to be completed before people can help in school but our office team can help you with this process. Please ring the school on 01489 894555, email adminoffice@swanmore-pri.hants.sch.uk or call in at the office if you are interested in volunteering.

Many thanks

Mrs J Hughes

Early Reading & Phonics Lead

Pop Up Food Bank

It's back! We're running our Pop-Up Food Bank this year in support of the Meon Valley Foodbank. If you are able to please bring along any donations to the playground before the start of the day and we will load them on to the mini bus and take it over to the Meon Valley Food bank for local families.

In December, perhaps a Christmas 'treat' might be there to help with the festivities even! Thank you in advance!

Pop Up Food Bank Dates

5 th Dec	20 th March
12 th Dec	17 th April
16 th Jan	22 nd May
13 th Feb	19 th June

The National Year of Reading

[<http://National Year of Reading 2026 | Go All In>]



2026 has been declared 'The National Year of Reading' and you will, undoubtedly, see lots in the media about this as the government and National Reading Agency encourage us all to read more and be role models for our children. You can find out more about it [<http://National Year of Reading 2026 | Go All In>] here and we will be providing details of news and events through the year. I thought we would start the year by sharing the School Library Service list of recommended reads for each year group - you will find them in the year group sections below. Why not show the poster to your child and ask them whether they've read any of the listed books; if not, perhaps you could head to a library or log onto Sora (our digital reading app) to see if they can borrow it!

As always, please don't hesitate to reach out to Mrs Cole if there is anything we can do to help yours or your child's reading journey. Email: library@swanmoreapps.com

HOME START Hampshire

Volunteer Preparation Training

Do you have a couple of hours per week and would like to help a local family?

Home-Start Hampshire recruits and trains volunteers to support local families with children under 11. Volunteers visit families to provide non-judgemental, emotional and practical support.

Our next volunteer preparation training begins, 14th January 2026 for 4 weeks in Titchfield. Contact us today to find out more.

familysupport@hshants.org.uk - 0330 124 2095

<https://home-starthampshire.org.uk/>

Where/when:
Abshot Community Centre
Kelsey Close, Titchfield Common, Fareham PO14 4NR

14th January 9:30 - 2:30
21st January 9:30 - 2:30
28th January 9:30 - 2:30
04th February 9:30 - 2:30

Scan the code to find out more

Home-Start Hampshire needs your help. We are a local charity that supports families with children up to the age of 11 in your community. Our volunteers offer friendly, practical support to parents who may be finding things tough — helping to make a real difference in their lives.

We are currently in urgent need of volunteers who can spare just a few hours a week to visit a local family.

Would you be able to share our "Volunteers Preparation Training" flyer with your parents (via your newsletter or parent mail) or display it on your school notice board? Your support would be invaluable in helping us reach more people who may be interested in volunteering.

To find out more about what we do, please visit our website: www.home-starthampshire.org.uk.

Thank you so much for your time and for helping us support families in our community.

Reception

|

Year 1

[Top](#)

Year 2

Year 2 will be joined by a student teacher, based in Woodpeckers class, for the Spring term

[Top](#)

Year 3

Y3C Assembly Friday 13th February 2026

Year 4

Year 5

[Top](#)

Year 6

Y6 Wales Residential & Y6 SATs Presentations have been sent out via email if you were unable to attend last night's meeting.

Y6M WOW Wednesday 4th February at 9.30am in the school hall; all parents from Y6M are welcome.

Holiday Activities



Easter 2026

MUSIC PRODUCTION

The Rose Theatre, Barton Peveril College, Eastleigh

Mon 30th & Tues 31st March

9:30am – 3:30pm

Suitable for children in Years 5,6,7 and 8

£85 (both days) including lunch



Dive into the world of music creation using iPads and GarageBand. Explore remixing, sampling, and live DJing with hands-on experience using professional gear. Discover how chords shape songs, experiment with different genres, and learn to build your own tracks from the ground up. Whether you're into beats, melodies, or mixing, everything you need is provided - just bring your creativity!



[Click here to watch a video about the enrichment days](#)



[Click here for the sign up form](#)

ROCK 2 THE BEAT

The Rose Theatre, Barton Peveril College, Eastleigh

Mon 30th & Tues 31st March

9:30am – 3:30pm

Performance Tues 31st at 3:30pm

£85 (both days) including lunch



Suitable for all Years 3-10 currently playing in a Rock 2 the Beat band, or who currently learn voice, guitar, bass, keyboard or drums at Grade 1 (or above) and are able to read basic notation.

Come and join other Rock 2 the Beat musicians from around the county and learn a song from start to finish, building confidence through collaboration and creativity. Limited places for each instrument, places will be allocated on a first come first served basis.



[Click here for the sign up form](#)

Holiday Activities

HAMPSHIRE
MUSIC
EDUCATION
HUB



Summer 2026 GET MUSICAL!

Five Days of Musical Theatre Magic – Western Style!

The Rose Theatre, Barton Peveril College, Eastleigh

Mon 10 – Fri 14 August 2026

10:00am – 4:00pm

Performance Friday at 5:00pm

Suitable for Year 4 – Year 13

£185 (includes £30 non-refundable deposit), including lunch

Breakfast Club available each morning from 8:30am at a
cost of £5 per day



Saddle up for an unforgettable week of singing, dancing, and acting as we bring the Wild West to the stage! Learn iconic show tunes, master toe-tapping choreography, and perform a spectacular medley at the end of the week.



[Click here for the sign up form](#)

★ *Whether you're a seasoned performer or trying musical theatre for the first time, this is your chance to shine!* ★

For more information

 music.service@hants.gov.uk

 hantsmusichub.org.uk/holidayactivities

SAVE THE DATE – MORE INFORMATION TO FOLLOW

***Our Rock 2 the Beat and Music Production enrichment days will run on
Monday 10th and Tuesday 11th August 2026.***

Active Holiday Camps



Swanmore College



SWANMORE
COLLEGE
Centre of Excellence

February Half Term

Monday 16th - Friday 20th February 2026

» Multi-Sports

This camp is ideal for all-rounders, offering a mix of your favourite sports and new activities.



Scan the QR code to
find and book your
nearest venue!

» Football

Learn key skills through fun sessions, games, and matches all week long!

- For ages 4-13 years
- 9am to 4pm
- Extended day options available

» Performing Arts

This camp is an action-packed week of dance, routines, technique, and fun!

£26.25 per day*

Get 15% off
with our Active
Saver code
'FEBAS15'
expires Sunday
1st February.



*FREE Mini
Campers for
children aged 4
and in Year R!



For more information or to book, visit:
www.activeme360.com

@activeme360



Active Holidays

Holiday Activities and Food Programme



Swanmore College



SWANMORE
COLLEGE
Centre of Excellence

February Half Term

Monday 16th - Friday 20th February 2026

» HAF Camp

Our HAF camp offers nutritious meals, engaging activities, and free childcare spots to children who receive benefit-related free school meals, supporting their health, wellbeing, and learning.

Free

- For ages 4*-13 years *They must be 4 years old and in Year R
- 9am to 4pm
- Wraparound Care available (charges apply)



Scan the QR code to find and book your nearest venue!



For more information or to book, visit:
www.activeme360.com

@activeme360

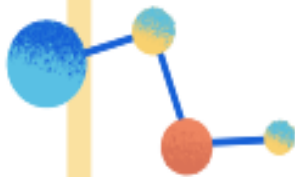




WALTHAM CHASE METHODIST CHURCH

CALLING ALL JUNIOR
SCIENTISTS

LET'S HAVE FUN!

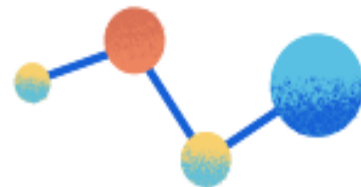


MEGA MAKERS

LIGHTHOUSE HOLIDAY CLUB

THURSDAY 19TH FEBRUARY

0930 - 12:30



science games, cooking, craft
and much more

£3.00 per child aged 5-11 years

TO BOOK A PLACE

Contact: anouska@chasemethodist.org

Tel: 07875218141



Your Health Visiting and School Nursing records all in one place...
at your finger tips



View and manage
your appointments
with Health Visitors



View your child's
vaccination history and
newborn blood spot
screening results



Search a wide
range of resources
about children's
health



View growth charts
and add
measurements



The Ages and Stages
questionnaires are
available for you to
complete electronically
before your child's 1
year/2 year health
reviews



National Childhood
Measurement
Programme.
Receive results of your
child's height and
weight measurements
(Year R and Year 6).

Today's health, tomorrow's future

Sign up today! Email parent.portal@nhs.net



We CARE through:



Compassion



Accountability



Respect



Excellence



Good Autism Practice

Gain practical knowledge, and discover hands-on tools and techniques to support autistic children in your setting.

Who is this training for?

This is a module for practitioners who work directly with autistic children in schools, and it provides guidance on processes and tools that can help practitioners to implement good autism practice.

What will you learn?

- Develop your knowledge and understanding of good autism practice
- Reflect on and improve your practice in working with autistic pupils
- Understand strategies and approaches you can draw upon for autistic pupils you work with
- Reflect on the kind of information you need to collect for creating a person-centred education plan
- Consider how to involve the autistic pupil and their family in setting learning goals

5
Hours



Developed by
leading autism
specialists



Up to date
with the latest
research



Enhances
your CPD



Free resources
and frameworks
linked to Ofsted



Optional
certification

Hub name Better Together Alliance

Date Thursday 26 February 2026

Time 9.30am – 2.30pm

Details Osborne School
Athelstan Road
Winchester
Hampshire
SO23 7GA



Henry Tyndale School
Learning & Achieving Together

Cost

£70.00
per person

Book your training now:

Email us at
bettertogether@henrytyndale.hants.sch.uk

Anxiety

Understanding & strategies to support young people

Tickets £20
Tea and
coffee
included

The day will provide an overview of the anxiety parent-led intervention we deliver for children and young people in CAMHS.

It is an opportunity for interaction and activities which will give psychoeducation and normalising of anxiety.

There will be chances to learn and practice strategies we teach parents in the intervention.



28 January 2026

The Irish Centre,
Council Road,
Basingstoke, RG21 3DH

11 November 2026

The Pallant Centre,
The Pallant,
Havant, PO9 1BE



For more information scan the QR code or visit:

<https://hampshirecamhs.nhs.uk/events/>

UNDERSTANDING ADHD



Tickets £20
Tea and
coffee
included

A day that focuses on skills and strategies, for parents, carers and professionals supporting a child with ADHD. Hampshire CAMHS Colleagues will be hosting this day alongside parents / carers with lived experience.



Understanding your child with ADHD, support, strategies and tips. Led by the Hampshire CAMHS ADHD team.

Support for SEN in education & what to do if it's not working. Led by Gayle Moir, SENDIASS Services Manager.

ADHD nervous system differences, sensory systems, emotional regulation, stress response, attention regulation, and executive functioning, Led by Courtney Freedman-Thompson-coach and wellbeing facilitator and lived experience.

5 March 2026

Junction Church,
2 Romsey Road,
Eastleigh SO50 9FE

16 Sept 2026

The Pallant Centre,
Havant, PO9 1BE

3 November 2026

Andover Baptist Church,
Charlton Road, Andover
SP10 3JH

For more information scan the QR code or visit:

<https://hampshirecamhs.nhs.uk/events/>



HOW TO COPE WHEN YOUR CHILD CANT

Tickets £25
Tea, coffee
and lunch
included

Three one-day events focused on parents/carers understanding their own needs, and learning strategies to look after themselves as they support a young person with their own mental health needs.

Each morning session will focus on different topics - further details can be found on our website.

The afternoon session will focus on How to Feel Better as a Parent in Burnout.

For more information and to book a place go to:
<https://hampshirecamhs.nhs.uk/events/>

Thursday, 22 January 2026
9:30am - 3:15pm

**St Peters Church Centre,
Jewry St, Winchester
SO23 8RY**

Friday, 15 May 2026
9:30am - 3:15pm

**The Hilt, Hiltingbury Road,
Chandlers Ford, Eastleigh
SO53 5NP**

Wed, 30 September 2026
9:30am - 3:15pm

**The Irish Centre, Council Road,
Basingstoke, RG21 3DH**

Some events have a small charge to allow us to cover costs, some discretionary free tickets are available

EMBRACING AUTISM

Tickets £20
Tea and
coffee
included

A day that focuses on skills and strategies, for parents, carers and professionals supporting a child with Autism.

Topics include:

- Supporting your autistic child to thrive - adapting to meet the needs of the autistic young person and practical strategies.
- Support for SEN in education & what to do if it's not working.
- Supporting Young People to Make Sense of their Experiences - empowering young people and putting them at the centre of their experience.

Discretionary tickets available to families on request.

4 February 2026

The Pallant Centre,
Havant, Hampshire
PO9 1BE

9 July 2026

Junction Church,
2 Romsey Road,
Eastleigh, SO50 9FE

17 November 2026

Andover Community Church
Charlton Road, Andover
SP10 3JH

For more information scan the QR code or visit:

<https://hampshirecamhs.nhs.uk/events/>



From **Hola** to **Hablando**: Spanish lessons for everyone



Join our Spanish Club!

Did you know Spanish is in the TOP 3 most spoken languages?

**Spanish after school Club – Tuesday's
at Swanmore Primary School**

If you are interested in signing up your child, please click on my booking link <https://spanish-4-kids.classforkids.io>, selecting the relevant school club to secure your child's place. Alternatively, if you wish to book a TRIAL lesson for your child, please feel free to using the above link!

If you have any questions, please do feel free to get in touch with me direct.
Pippa Chia - spanish4kidshants@gmail.com 07971 213619

Find out more at www.spanish4kids.co.uk



Spanish4Kids
AND ADULTS!